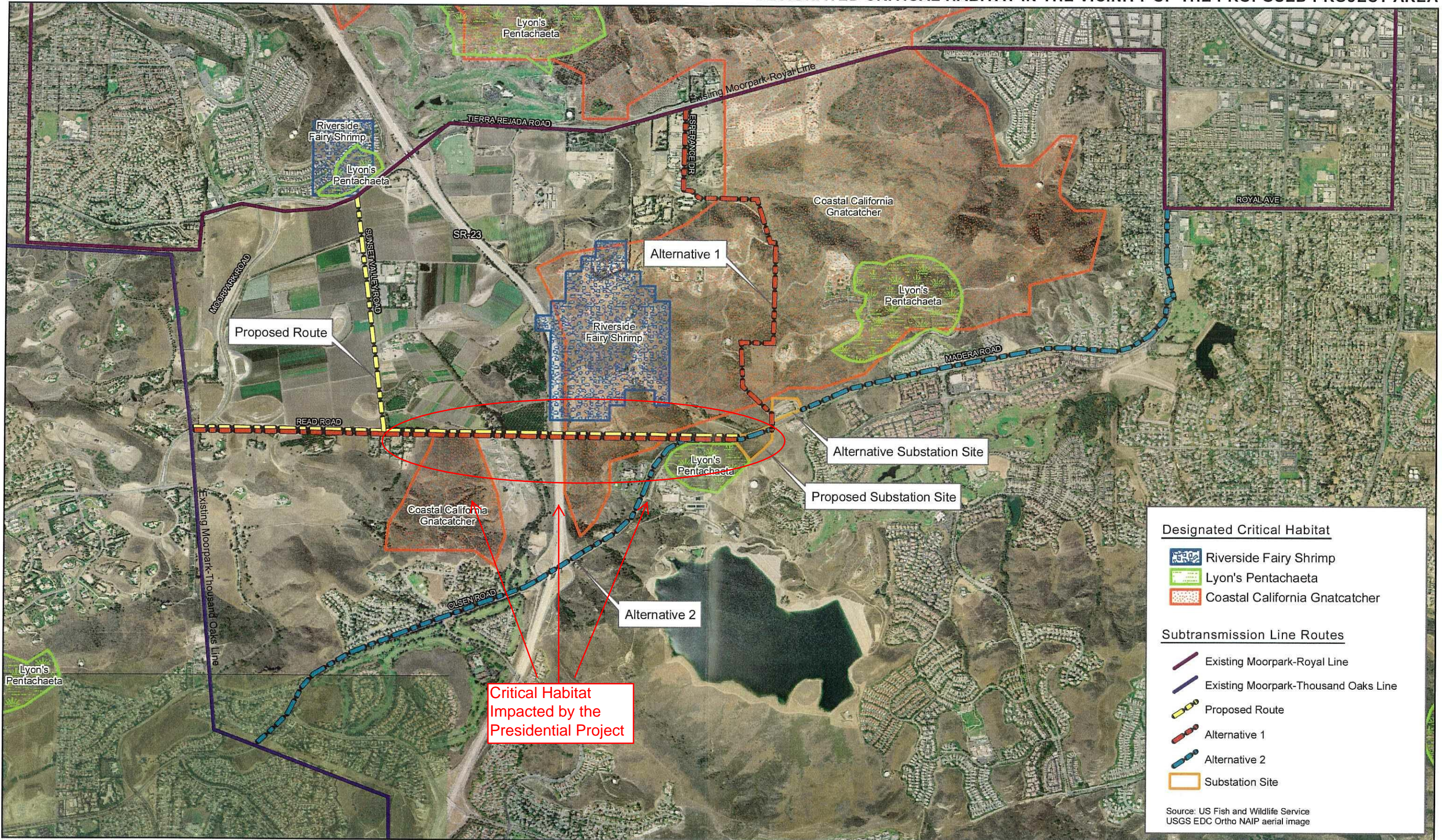


PRESIDENTIAL SUBSTATION PROJECT

Southern California Edison

FIGURE 4.4-1
DESIGNATED CRITICAL HABITAT IN THE VICINITY OF THE PROPOSED PROJECT AREA



Designated Critical Habitat

- Riverside Fairy Shrimp
- Lyon's Pentachaeta
- Coastal California Gnatcatcher

Subtransmission Line Routes

- Existing Moorpark-Royal Line
- Existing Moorpark-Thousand Oaks Line
- Proposed Route
- Alternative 1
- Alternative 2
- Substation Site

Source: US Fish and Wildlife Service
USGS EDC Ortho NAIP aerial image

